

The Ishikawa Foreign Residents Employment Support Desk is available to help foreign students with job-hunting in Ishikawa!

Job-Hunting Events and Seminars
Recommended for Foreign Students

Matching Support from Employment Agencies

Introductions of Companies Interested in Foreign Students (See website for details!)

Take Advantage of Employment Support Consultation Desks!

Jinzai Joho Center

Provides support for new graduates and other people looking to change careers with full-time employment in the Hokuriku region, especially Ishikawa. Job-hunters can get help and advice for interviews, or even have someone come along to sit in with them on interviews. Jinzai Joho Center has a solid track record of helping foreigners find full-time employment in Japan — set up a consultation to find out how they can help.

Tel: (076) 263-6663
Email: info@jjc-net.co.jp

Aureole-Vietnam Cooperative Business Association

For Consultations in Your Native Language (Including English and Vietnamese)

This association introduces job seekers of foreign nationalities to companies, mainly in the Hokuriku region. It also provides advice for interviews, and support services for after employment. International students who expect to graduate next spring are welcome, as are people seeking a change of career. Feel free to contact the association. (Required status of residence: "Engineer/Specialist in Humanities/International Services" or "Specified Skilled Worker")

Tel: (076) 264-9201
Email: tokutei_ginou@aureole-v.comPasona
(ILAC Tokyo/Osaka)

Pasona (ILAC Tokyo/Osaka) offers help to students and anyone else interested in working in Ishikawa. Foreign students welcome! Feel free to ask for help if you're thinking about working full-time in Ishikawa.

Tel: (03) 6734-1947 (Tokyo), (06) 6809-7603 (Osaka)
Email: support@ishikawa-note.jp

Support Desk

Offering matching support with businesses, in cooperation with employment agencies. Free consultations are available, so feel free to contact any of the support team members above for a consultation.

<http://www.jobcafe-ishikawa.jp/ifres/jp/>

Website available in Japanese, English, Chinese, and Vietnamese



Other Employment Consultation Desks

Foreign Worker Consultation Corner (Ishikawa Labor Bureau)

The Foreign Worker Consultation Corner provides explanations of laws and ordinances regarding working condition issues, and can point people toward other related organizations. Assistance is also available in Vietnamese and Chinese.

Contact in Japanese
(Supervisory Department)Tel: (076) 265-4423
Phone hours:
weekdays 8:30 to 17:15

Contact in Vietnamese or Chinese

Tel: (076) 200-9771
Phone hours: Vietnamese Thursdays 9:00 to 16:30
Chinese Fridays 9:00 to 16:30
(Closed for national holidays and new year holidays)Ishikawa Foreign Talent Adoption Support Center
(Ishikawa Administrative Scrivener Association)

At the Ishikawa Foreign Talent Adoption Support Center, administrative scriveners who professionally specialize in working with foreigners can help out with procedures for starting work, applying for status of residence changes, and more. Don't hesitate to call!

Tel: (076) 204-7445 Fax: (076) 268-9556
Phone hours: weekdays 13:00 to 16:00
(closed Sat., Sun., national holidays, and new year holidays)
Faxes accepted at any time.Let's Hear from Employers
in Ishikawa!

The main catalyst for our original decision to hire a foreign employee was our need for someone who could take charge of foreign operations and serve as a mediator between our headquarters plant in Japan and our subsidiary in China, as our foreign trade business expanded due to the large amount of production demand from customers. Since then, we've hired foreign employees in other fields, such as quality assurance and purchasing. They have helped make our work with our subsidiary in China much smoother, and have contributed to our current improvements in quality and production.

At present, we consider it less "hiring foreign employees" and more "hiring excellent employees," and we hope that these employees will help out with not just work involving China, but all types of work that will create added value for the company. To that end, regardless of the type of work they'll be doing, we want applicants whose Japanese level is at least JLPT N1. Working in Japan means getting used to different value judgements and a different culture, so it's also important to be flexible in how you approach things. Sometimes you need to demonstrate leadership skills, like being able to think logically in order to provide an easy-to-understand explanation for someone, or stepping in to help adjust something. Our company aims to be fair and impartial in evaluations, using the same standards for Japanese and foreign employees, so we now have leaders and managers at our company who are from other countries, as well as foreigners playing other important roles.

There are many companies in Japan that could use your unique character and talent. At the same time, Ishikawa is a great place to live, with rich natural beauty and warm, friendly people. I hope to see many more foreign students choose to stay here and work in Ishikawa after they graduate.

(From a manufacturing company in Ishikawa)

Let's Hear from Foreigners
Working in Ishikawa!**Why I Found Full-Time Work in Ishikawa:** The first time I found myself wanting to work in Ishikawa was when I saw the beauty of the cherry blossoms in Kanazawa. I also have a lot of good friends in Ishikawa now, too. Looking back, though, I'm glad I did wind up working here in Ishikawa, because the people here are so friendly — I once went on a walk near my home on an off-day, and an old lady I'd never met offered me some daikon. I was shocked! Living on my own, far away from family, I'm very thankful for these moments of human warmth.**Why I Chose the Company I Work For:** I've had an interest in making things ever since I was a kid. Based on a recommendation from a teacher where I studied, I visited a manufacturing company, where I now work. The person in charge of personnel was very nice to me, as was the employee I met who was from China. I also got the impression that the company emphasized autonomy and creativity. My worries vanished as I found myself wanting to work for such a warm, friendly company.**My Current Job:** I currently work for the quality assurance department, and I handle a lot of the work involved in keeping quality high. In particular, I'm involved in work like handling defects, performing inspections, and inventory sorting. In the manufacturing industry, quality is of paramount importance, so I take pride in helping the company maintain high quality.**Goals for the Future:** Right now, I want to further improve cooperation between the headquarters plant and the China plant, so that both plants can make the most of their individual strengths for mutual benefit. And personally, even though I come from a humanities background, I've always had a strong interest in technical work, so I hope to take on new challenges.**Advice for Current Foreign Students:** Job-hunting is difficult and a lot of work, but never give up on finding the right job for you. The struggles you're going through now won't go to waste — they'll surely serve you in the future. Believe in yourself, work hard, but don't forget to also have fun! You have to be able to enjoy life.

(From China, hired by a manufacturing company)

Contact

いしかわ外国人採用・就職サポートデスク
Ishikawa Foreign Residents Employment Support Desk

いしかわ就職・定住総合サポートセンター ｼｮｰﾌﾞﾌｧｰﾏｲﾍﾞﾙ Job Café Ishikawa

Tel (076) 256-5120

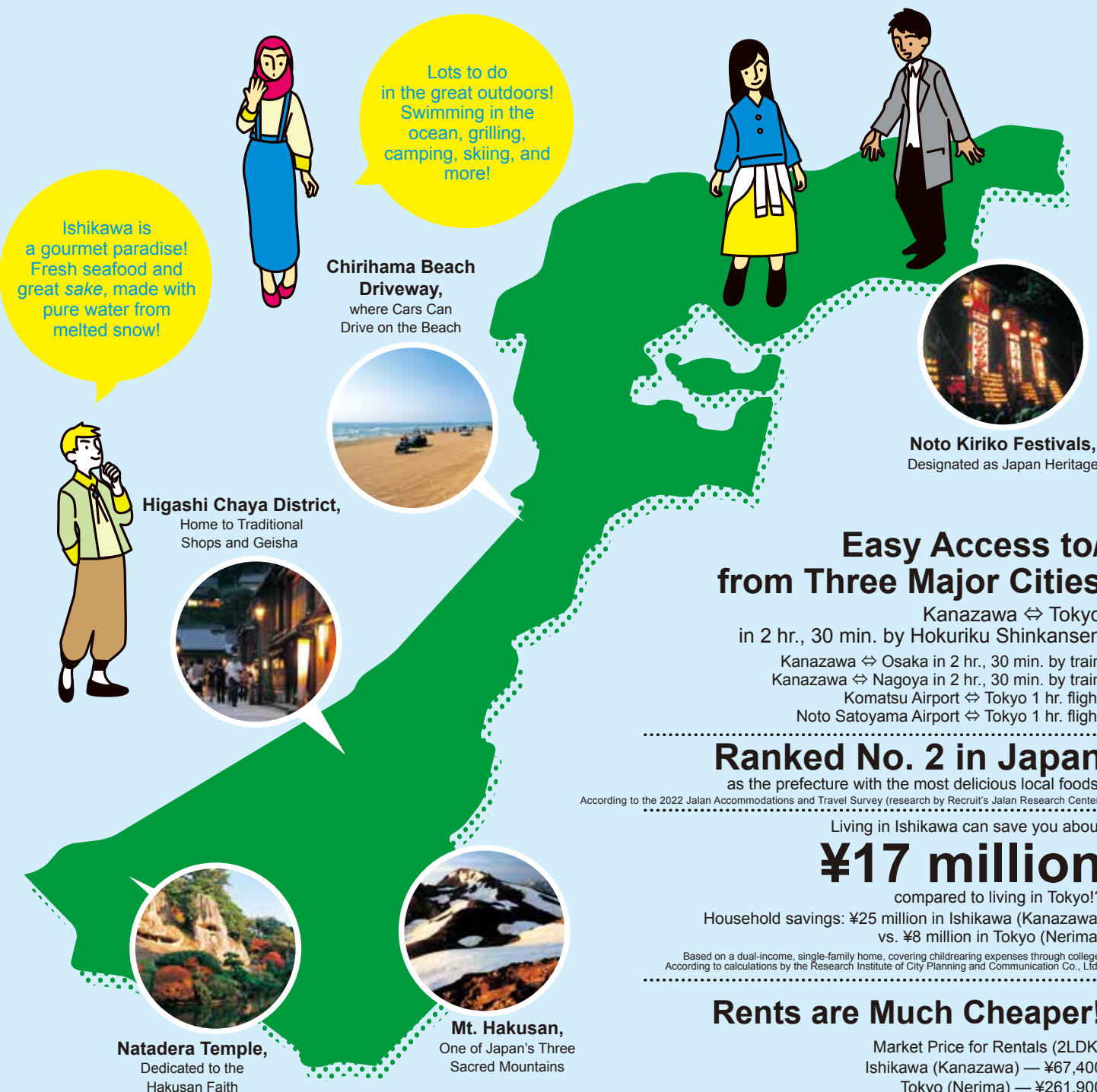
Email global@jobcafe-ishikawa.jp

Tel (076) 264-9201

Email okutei_ginou@aureole-v.com

For consultations in Japanese, contact the
Ishikawa Foreign Residents Employment
Support Desk (at Job Café Ishikawa).For consultations in English, Vietnamese, or other
languages, contact our partner Aureole-Vietnam
Cooperative Business Association.

Attention Foreign Students!

ISHIKAWA: A GREAT PLACE
TO LIVE AND WORKEasy Access to/
from Three Major CitiesKanazawa ⇄ Tokyo
in 2 hr., 30 min. by Hokuriku Shinkansen

Kanazawa ⇄ Osaka in 2 hr., 30 min. by train

Kanazawa ⇄ Nagoya in 2 hr., 30 min. by train

Komatsu Airport ⇄ Tokyo 1 hr. flight

Noto Satoyama Airport ⇄ Tokyo 1 hr. flight

Ranked No. 2 in Japan

as the prefecture with the most delicious local foods.

According to the 2022 Jalan Accommodations and Travel Survey (research by Recruit's Jalan Research Center)

Living in Ishikawa can save you about

¥17 million

compared to living in Tokyo!?

Household savings: ¥25 million in Ishikawa (Kanazawa)

vs. ¥8 million in Tokyo (Nerima)

Based on a dual-income, single-family home, covering childrearing expenses through college.
According to calculations by the Research Institute of City Planning and Communication Co., Ltd.

Rents are Much Cheaper!

Market Price for Rentals (2LDK)

Ishikawa (Kanazawa) — ¥67,400

Tokyo (Nerima) — ¥261,900

According to independent investigation by HOME'S

English



中文



Tiếng Việt



